

Operating Instructions

Solar Floating Light „Float 15 / 20“ multicolor

Customer support:

If you have problems or questions regarding this product, simply contact us!
 esotec GmbH, Industriegebiet Weberschlag 9, D-92729 Weiherhammer

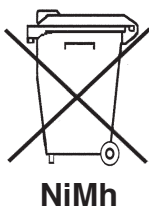
By phone: +49 9605-92206-0

By e-mail for ordering spare parts: ersatzteil@esotec.de

By e-mail for questions about the product: technik@esotec.de

Battery take-back

- Batteries must not be discarded into domestic waste.
- The consumer is legally required to return batteries after use, e.g. to public collecting centers or to battery distributors.
- Contaminant-containing batteries are labeled with the sign "crossed-out trashcan" and one of the chemical symbols. Used batteries should be disposed environmentally friendly and should not be discarded into domestic waste. Your dealer is legally required to take back old batteries.

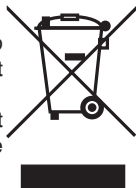


Rechargeable battery notes

- Rechargeable batteries should not be played with by children. Never leave rechargeable batteries lying around; they could be swallowed by children or pets.
- Rechargeable batteries must never be short-circuited, disassembled or thrown into fire. This leads to a danger of explosion!
- Leaking or damaged rechargeable batteries can cause chemical burns when they come into contact with skin. For this reason, please make use of suitable protective gloves.
- Rechargeable batteries should only be replaced by structurally identical rechargeable batteries from the same manufacturer. Normal batteries must not be used since these are not rechargeable.
- Make sure the rechargeable batteries are inserted with the correct polarity.
- For long periods of time of non-use (for example, storage), remove the inserted rechargeable batteries to avoid damages via the leaking rechargeable batteries.

Disposal:

Dear customer, please cooperate in avoiding waste. When you intend to dispose of the product in future, please consider that it contains valuable raw materials suited for recycling. Therefore, do not dispose it of with domestic waste but bring it to a collection point for the recycling of waste electrical and electronic equipment.



Thank you very much for your cooperation!

1. Introduction

Dear customer, we thank you for purchasing the Solar Globelicht. With this Solar Light you have purchased a product that complies with the latest and most up-to-date technology.



This product complies with the European and National Standards. The relevant certificates of conformity are deposited with the manufacturer.

To preserve this standard and in order to maintain safety you must adhere to the use instructions!

2. Security Instructions



In the event of any problems arising or damage occurring from not following these instructions, the warranty is deemed cancelled. The manufacturer will not be held responsible for any claims or damages arising from the misuse of this product.

- For safety reasons and in order to maintain standards (CE) you are prohibited from altering or changing any component in the product.
- Please follow the instructions very carefully.
- For commercial applications due care and attention must be paid to the Health and Safety Standards in your jurisdiction.

3. Function and Intended Use

The solar lamp is designed for year-round outdoor operation. It may either be operated floating on a water surface or standing on the ground. If the lamp is operated floating, it will have to be taken off the water surface in case of frost.

A weight in the bottom part of the globe prevents any overturning of the globe in case of wind on the water surface or on the ground.

The solar lamp muss has to be positioned free from shadows and facing the sun. Recommended is a place on a south, east or west side. Shady north sides or not suitable for solar lamps.

The light color is alternating or lockable in position. This may be selected by the IR remote control included in the delivery. Via a button inside the globe it is possible to select the white light color between cold or warm white.

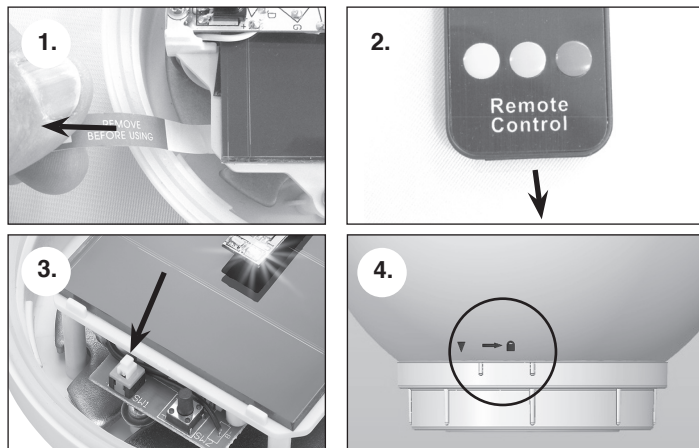
The integrated rechargeable battery is charged by the solar cell installed inside the solar module. The lamp is automatically switched on at darkness and switched out at the break of dawn or if the battery is discharged.

3 light emitting diodes (LEDs) are used as light source. Those LEDs ensure a high luminosity with a low consumption of power and lifetime of more than 50 000 hours.

Note: During longer periods with insufficient insolation, the accumulator is charged insufficiently in order to guarantee a permanent readiness for operation. **However, that does not mean that the solar lamp is defective.** Please wait for the next sunny days and the light will work accordingly.

On average, battery has to be exchanged every two years!

4. Putting into Operation



1. Please carefully take the parts out of the package.
2. Unscrew the globe anti-clockwise from the bottom part and take off the globe.
3. Carefully pull out the strip. The lamp is thus activated (illustration 1).
4. Now take the remote control and pull out the plastic strip at the bottom side to activate the remote control (illustration 2).
5. The light globe has 7 different luminous colors. For white, it is possible to select between cold or warm white. This selection is done via the switch inside the globe. Now take the open globe to a dark place and hold the remote control in the direction of the globe and press the button „W“ on your remote control. The white LED lights up now. The switch „SW1“ (illustration 3) is used to firmly select the luminous color warm or cold white. The switch „SW2“ has no significance for this function, it is only there for service purposes.
6. Now carefully screw the globe back onto the bottom part.

Note: The globe has to be closed tightly in order to avoid the ingress of water into the globe. When screwing the globe on, make sure that the thread is not twisted and that the symbol of the closed lock is between the two marks in the bottom part (illustration 4). Only then, the globe is closed tightly and correctly.

The lamp is now ready for operation!

Note: The duration of illumination/light ON time strongly depends on the intensity and duration of the solar irradiation during the day. During the winter months please generally expect a shorter light ON time. If the lamp should not shine on the first evening, please wait for a sunny day.

7. Now place the globe onto a water surface or put the globe on the ground.

8. Via the IR remote control, the globe may comfortably be controlled during the night. In doing so, the IR remote control has to be directed directly to the globe.

Functions of the IR remote control:

- „OFF“: Globe is switched off. The battery is further charged under solar exposure!
- „Cycle“: It is possible to switch through the individual luminous colors. After that, the globe continuously its operation in the color change mode.
- „W“: Permanent light color white is activated.
- „R,G,B“: By pressing the corresponding color, the light color is selected permanently. To return to the color change mode, simply press the button „Cycle“ again.

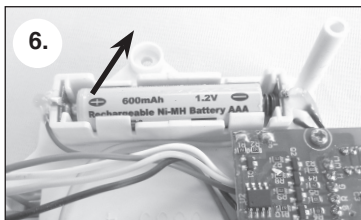
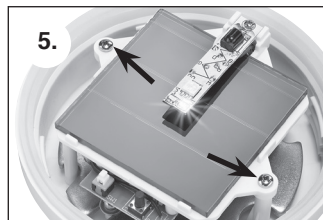


5. Exchange of the rechargeable Battery

On average, the battery in the light globe has to be exchanged by a new and identical in construction battery every two years. Used here is a NiMH battery of the size (AAA, Micro) with 1.2 V/ 600 mAh. In case you should not be able to find a 600 mAh battery at your retailer's, you may at any time use a battery with a higher capacity. A replacement battery is available from your retailer or the manufacturer under www.esotec.de

Proceed as follows when exchanging the battery:

1. Unscrew the globe anti-clockwise from the bottom part and take off the globe.
2. Loosen the two screws with a suitable screwdriver and carefully take off the part with the solar module (illustration 5).
3. Carefully take the battery on the backside from the bracket and replace it by a new, identical in construction battery (illustration 6).



Note: Please only use a new rechargeable battery of the same size (Micro, AAA) and identical or higher capacity. It is recommended to charge the battery in a battery charger before inserting it.

4. Now reattach the upper part with the solar module and tighten the screws with a suitable screwdriver.
5. Now carefully screw the globe back onto the bottom part.

Note: The globe has to be closed tightly in order to avoid the ingress of water into the globe. When screwing the globe on, make sure that the thread is not twisted and that the symbol of the closed lock is between the two marks in the bottom part (illustration 4). Only then, the globe is closed tightly and correctly.

The lamp is now ready for operation again!

6. Malfunctions

1. **It is not possible to control the light color of the globe by means of the remote control!**

Remedy: Is the plastic strip at the bottom side of the remote control removed (only when putting the remote control into operation for the first time)?

Remedy: Please note that the globe may only remote controlled at night!

Remedy: Battery in the remote control too weak or exhausted? Exchange battery by an identical in construction type!

Remedy: No sunshine during the day. When the sky is cloudy and without sunshine, the installed battery is not charged sufficiently! Wait for a sunny day!

Remedy: This is an IR remote control. For the control of the globe, please direct the remote control to the globe.

2. **Globe has no function!**

Remedy: Battery in the light globe has reached the end of its lifetime (exchange it every 2 years at the latest!)?

Remedy: No sunshine during the day. When the sky is cloudy and without sunshine, the installed battery is not charged sufficiently! Wait for a sunny day!

Remedy: Globe activated? See instructions item 4. part 5.

Remedy: Was the globe switched off via the remote control or battery was deep discharged? Press the button „Cycle“ on the remote control and hold the remote control in the direction of the globe.

7. Technical Data

Solar floating light Float 15 multicolor

- Solar module: 0.2 Wp amorphous
- Illuminant: 3 LEDs (1 x RGB; 1 x warm white, 1 x cold white)
- Light colors white: 3000 K/ 6500 K
- Luminous intensities white: 3.5 lm/ 4 lm
- Battery: 1.2 V/ 600 mAh (Micro, AAA)
- Material lamp: PMMA
- Protection type light globe: IP 66
- Protection class: III
- Temperature range: -10°C to +40°C (frost-free when used floating!)
- Light ON time when fully charged: max. 8 h

Solar floating light Float 20 multicolor

- Solar module: 0.3 Wp crystalline
- Illuminant: 3 LEDs (1 x RGB; 1 x warm-white, 1 x cold white)
- Light colors white: 3000 K/ 6500 K
- Luminous intensities white: 3.5 lm/ 4 lm
- Battery: 1.2 V/ 600 mAh (Micro, AAA)
- Material lamp: PMMA
- Protection type light globe: IP 66
- Protection class: III
- Temperature range: -10°C to +40°C (frost-free when used floating!)
- Light ON time when fully charged: max. 8 h

Replacement battery: 1.2 V/ 900 mAh (Micro) Spare part art.-No.: 901023

All spare parts are available under www.esotec.de